



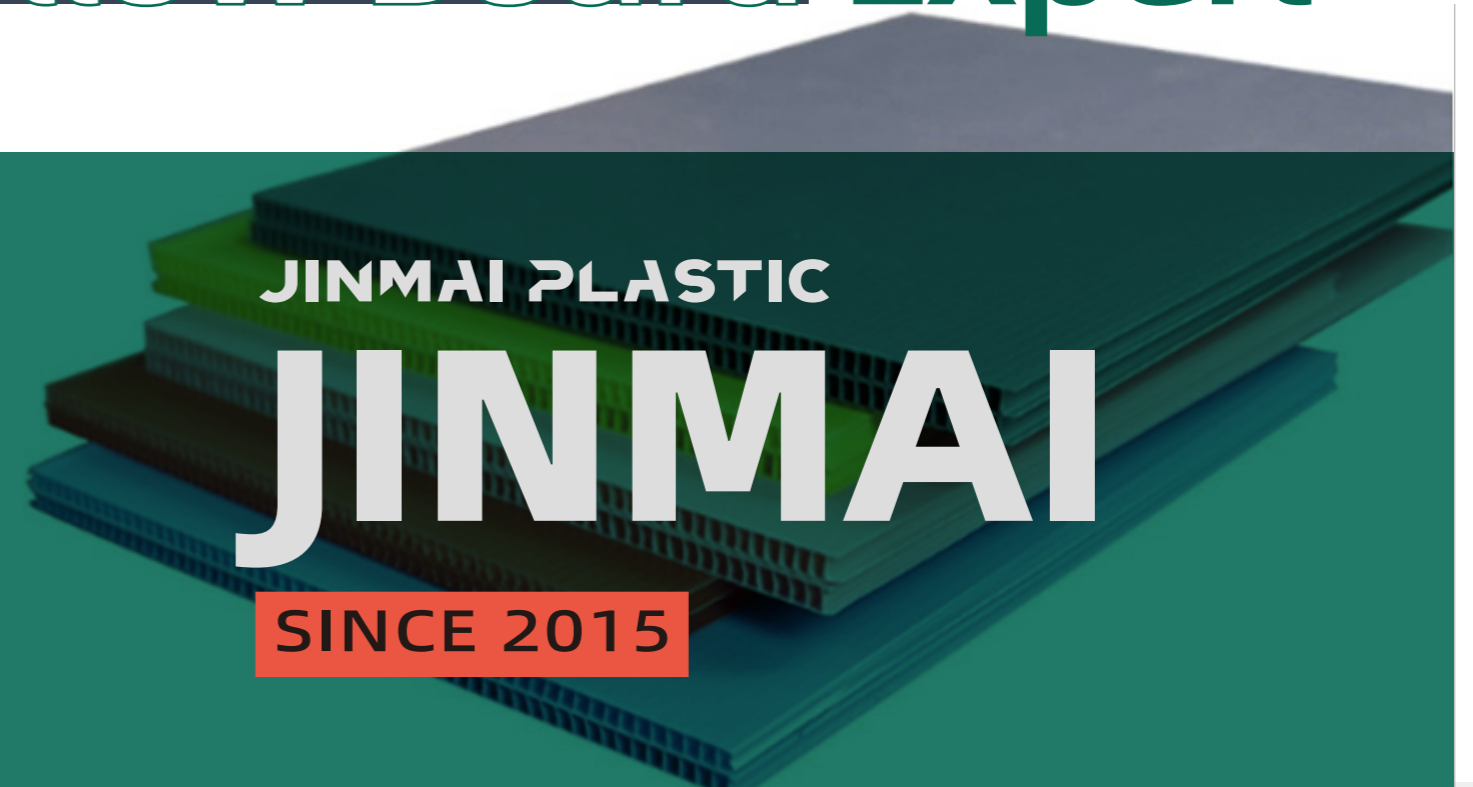
JINMAI
www.jinmaiplastic.com

Your
Packaging Solutions Expert

Professionalism | YOUR EXCLUSIVE PACKAGING SOLUTIONS EXPERT | JINMAI 
Customize Packaging Solutions with Professionalism

Environmentally Friendly
Professional Manufacturing
Leading in Quality

PP Hollow Board Expert



✉ Email

zsjmsl168@gmail.com

📞 Contact Number

0760-23225918

📍 Address

Hang'er Industrial Park, Maxin Industrial Zone, Huangpu Town, Zhongshan City, Guangdong Province, China

2023年：荣升为中山市规模以上企业
2025年：成功跻身高新技术企业行列
资质认证：通过ISO9001质量管理体系认证



We provide you with
 high-quality plastic packaging
 and professional solutions
 to ensure you always move forward
 steadily in your industry!

Table of Contents

About Us	02
Equipment Display	03
Hollow Board Series	09
Anti-static Type	11
Flame-retardant Type	13
Anti-UV Type	15
Industry Application Cases	17
Hollow Box Series	19
Partners	35

Thank's for Considering Us About Us

 <p>Environmental Gene Recyclable PP Environmental Material</p>	 <p>Technical Expertise 20+ National Patents</p>	 <p>Manufacturing Strength Imported Precision Equipment Cluster</p>	 <p>Brand Trust Long-term In-depth Cooperation with Well-known Enterprises</p>
---	--	---	--

BRINGING SUSTAINABILITY INTO EVERY PACKAGE

About Us

we've been weaving "green genes" into every link of plastic packaging

Zhongshan Jinmai Plastic Packaging Co., Ltd. takes "making every package an environmental protection carrier" as its goal and follows the differentiated path of "technological breakthrough + scenario deep cultivation":

- **Technical End:** A core R&D team of more than 30 people focuses on recyclable PP material modification and hollow board lightweighting. The product's wear resistance, antistatic performance, and flame retardant rating are 15%+ ahead of industry standards;
- **Scenario End:** Instead of making general packaging, we customize moisture-proof and impact-resistant back panels for home appliances, turnover boxes for electronics with an electrostatic dissipation rate of <0.5s, and logistics folding express boxes with a 60% volume reduction, promoting environmental protection packaging in various fields.

For more than ten years, we have rejected "homogeneous following" and adhered to "problem-oriented innovation", spreading the spark of "green packaging" into more industrial scenarios.

Our Equipment Strength

Equipment Display

Equipment Showcase



2400 Hollow Board Forming

① Raw Material Pretreatment: PP granules remove trace moisture in a drying workshop at 80-90°C to avoid bubbles in the board and ensure the surface of antistatic hollow boards is smooth.



Automatic Die Cutting Machine (2 Sets)

A sharp tool for precise cutting in large-scale production, suitable for standardized orders:

Equipped with photoelectric positioning + 10-20 tons of high-pressure stamping, it cuts 30 sheets per minute, producing regular components such as turnover box side panels and partitions;

Suitable for unified home appliance packaging and standardized logistics express boxes, with $\pm 0.1\text{mm}$ cutting accuracy + continuous operation, enabling efficient and stable mass production of general products and ensuring order delivery.

② Heating and Melting: Dried granules are fed into a spiral heating cylinder at 180-220°C, turning into a uniform plastic melt. Viscosity is monitored in real-time (too high causes the board to be hard and cracked, too low makes it soft). Precise control ensures the wear resistance of the hollow board (the general type can bear a pressure of 50kg).



Customized Flexible Response Equipment, forming a "Large-Scale + Personalized" cutting combination with automatic die cutting machines: For small-batch orders such as the special-shaped structure of electronic turnover boxes and the creative shape of hollow board billboards, alloy steel molds can be quickly replaced, and positioning can be manually fine-tuned to adapt to complex dimensions and special notches; It helps Jinmai undertake high-end customized orders and serve the individual needs of small and medium-sized customers, breaking the industry limitation that "mass production and customization cannot be balanced".

Semi-automatic Die Cutting Machine (5 Sets)



③ Mold Shaping: The melt is pressed into customized molds (with different specifications of grid patterns) to meet the requirements of 10mm turnover box side panels, refrigerator back panels with reinforcing ribs, etc., and pressed into hollow grid plastic embryo panels.

④ Cooling Shaping + Trimming: The embryo panel is cooled and hardened by 25-30°C cold water spraying. Burrs are trimmed with a trimming knife. The final hollow board has a thickness error $\leq 0.05\text{mm}$ (less than 1/2 of a hair strand). The anti-static/-flame-retardant versions have precise shapes and can be directly connected to the next process.



Die Cutting Machine (2 Sets)

A precise shaping equipment for special-shaped packaging, suitable for non-standard component processing:

Equipped with high-hardness alloy steel molds + step-by-step cutting technology, it can process 15mm thick hollow boards to 0.5mm advertising films, achieving smooth notches and precise dimensions; The cutting error of antistatic hollow board holes and billboard shapes is $\leq 0.1\text{mm}$, and waste is automatically recycled, increasing raw material utilization by 10%+, taking into account precision and environmental protection.



Automatic Laminating Machine Line (2 Lines)

The central hub for refined assembly of environmentally friendly packaging, solving the problem of firm bonding of multi-layer materials:

Using environmentally friendly hot melt adhesive for precise spraying (15-20g/㎡), equipped with a visual alignment system + temperature-controlled pressing rollers, achieving seamless lamination of substrates with antistatic films and moisture-proof layers; In the processing of refrigerator back panels, it can avoid glue pollution and edge warping. In paper box production, it improves stiffness through pre-folded edges. The lamination quality is suitable for high-end scenarios such as home appliances and pharmaceuticals.

Lamination for Composite Hollow Boards

① Eco-friendly Gluing: Use formaldehyde-free hot melt adhesive, with glue amount precisely controlled at 15-20g/㎡. The spray head adjusts the gluing range based on the board width, avoiding glue waste.

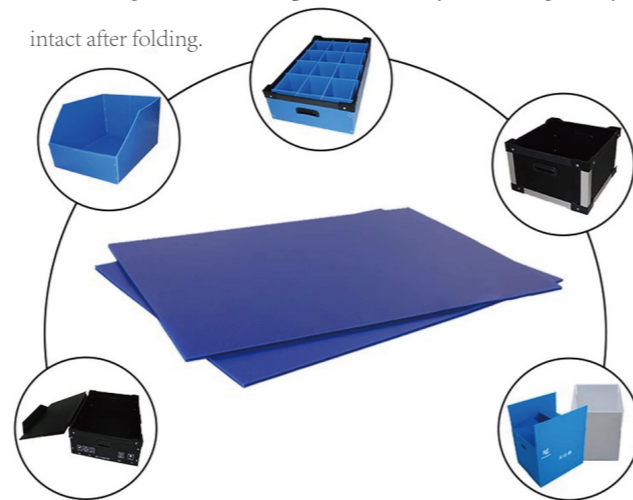
② Visual Alignment: The glued substrate is sent to the visual recognition area, where the camera sensor captures edges in real-time, 10 times more accurate than traditional methods. Alignment error is $\leq 0.03\text{mm}$ when laminating antistatic film, ensuring antistatic performance.

③ Temperature-Controlled Pressing: The pressing roller is heated at 40-50°C to activate glue viscosity without deforming the PP substrate. Roller pressure is adjusted by region—higher pressure at edges to prevent warping, moderate pressure in the middle to protect the hollow structure.

Lamination for Hollow Board Pack

The process adds a "pre-folding edge" step:

Before lamination, the hollow board passes through a "folding wheel" (similar to a tailor creasing fabric), then is glued and laminated. This makes the box corners stiffer. For example, reusable express boxes for logistics clients rely on this step to stay intact after folding.



Ultrasonic Welding Machine

It is an "expert in seamless splicing" for plastic parts, using physical welding instead of chemical bonding to align with the core environmental concept. Through high-frequency vibration of 20,000-40,000 times per second, it locally melts the plastic contact surface and quickly shapes it under 5-10kg pressure. Whether for turnover box buckle connections or sealing edges of electronic component packaging, it achieves "no glue marks, no odor, and strong tensile strength". The welded part can withstand 15kg pressure without cracking, perfectly meeting the quality requirements of precision packaging.

Stitching Machine (8 Sets)

It is an "efficient assembly engine" for turnover box production, breaking capacity bottlenecks via multi-machine parallel layout. Featuring silent nail head design and infinite-length feeding system, it can quickly reinforce frames of fruit boxes and logistics boxes, and process 15mm-thick heavy duty turnover boxes. When 8 devices operate simultaneously, they can complete stitching for thousands of boxes daily. The flat and firm nails, along with precise dimensions after die-cutting, ensure turnover boxes remain intact after repeated use.



Automatic Nailing Machine

It is an "automated finishing tool" for carton packaging, replacing manual work with machinery to improve efficiency and precision. Via photoelectric induction, it automatically positions nailing points, with uniform nail spacing and controllable depth, avoiding missing or misaligned nails. In mass production of express boxes and home appliance outer packages, it cuts nailing time per box to 3 seconds. With an automatic feeding system, it greatly reduces labor costs and ensures consistent nailing quality for each batch.

Four-Color Printing Machine

It prints brand LOGOs, product labels, and eco-slogans on hollow boards via CMYK, linking practical packaging with brand communication.

It forms a "forming→printing→cutting" process with molding and die-cutting machines. It can preset printing ranges according to die-cut sizes (e.g., precisely printing LOGOs on 30cm×50cm turnover box side panels) to avoid cutting waste.

It supports switching between mass and small-batch production: mass printing of general labels reaches 15m/min, and small-batch ink change and parameter adjustment only take 10 minutes, without delaying production.

For Jinmai, it's not just a printing device but a value-adding tool for hollow boards—transforming them from "loading tools" into multifunctional carriers that convey brands, provide functional prompts, and fit environmental concepts, meeting the needs of home appliance, electronics, and logistics sectors.



Plastic Packaging Isn't Just a Container. It's a Bridge Between Protection and Sustainability.

WE ARE READY HERE

Our Products

From raw material selection to structural design, every link is designed to balance "product protection" and "environmental responsibility". We focus on providing plastic packaging solutions that are durable, recyclable, and adaptable to multiple scenarios.

Zhongshan Jinmai Plastic Packaging Co., Ltd. focuses on eco-friendly plastic packaging, with "full-link green empowerment" as its core. It has built a complete green value system covering recycled raw materials, low-carbon intelligent production, durable products for cost reduction, and recyclable waste closed-loop. Relying on 20 patents and intelligent production lines, it customizes "protection + carbon reduction" dual-effect packaging solutions for home appliance, electronics, logistics and other industries, making packaging not only a "safety shield" for products but also a "plus item" for enterprises' green competitiveness.

INFO GRAPHIC

JINMAI

1

Adapt to Hollow Boards:
Solve printing challenges of special materials



2

Eco-friendly:
Print vibrantly & keep the "green promise"



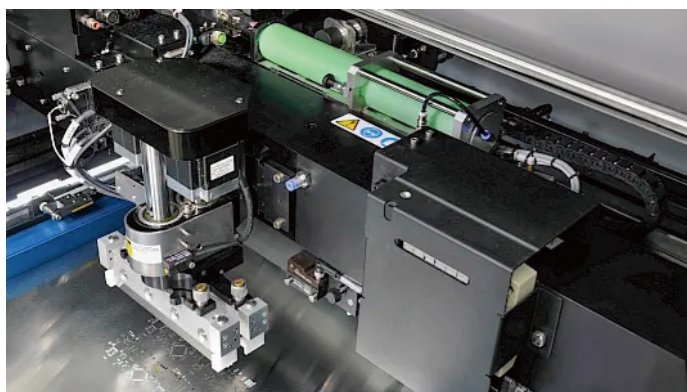
3

Color Capability:
Cover from "clear identification" to "creative presentation"



4

Production Line Synergy:
Seamless connection to improve overall efficiency



Automatic Printing Machine

It is a "carrier for personalized expression" in brand packaging, enabling eco-friendly packaging to have promotional value. It supports multi-color overprinting and customized pattern printing, allowing clear presentation of customers' LOGOs, product parameters, or eco-labels on hollow boards and hollow board boxes.

For customized packaging needs of brands like Midea and Hisense, it can achieve seamless connection of "printing - cutting - forming". The ink adhesion is wear-resistant and does not fade in friction tests, meeting the brand image display needs while not affecting the recyclability of the packaging.



Full-Cycle Raw Material Base

Using 100% renewable PP raw materials, injecting green attributes from the source; After multiple screening and pretreatment processes, it still maintains excellent wear resistance and impact resistance after melting and shaping. After disposal, it can be crushed and granulated, achieving a closed loop of "raw material→product→recycled raw material". A single product can be reused more than 50 times, helping enterprises reduce resource consumption costs.

Intelligent Customized Structure

Relying on intelligent equipment such as 2400 hollow board molding machines and ultrasonic welding machines, "full-dimensional customization" is realized.

Multi-Scenario Adaptation

Hollow boards can statically bear 50kg without long-term deformation. Turnover boxes maintain integrity and protection after drop and stacking tests. Suitable for home appliance long-distance transportation and electronic component precision storage, extending service life by over 30%.

Low-Carbon Manufacturing

Equipment adopts energy-saving drive technology, reducing energy consumption by 20% compared to traditional production lines. Auxiliaries like ink and glue are VOC-free and eco-friendly, achieving full-link carbon reduction. The packaging comes with a "low-carbon label", helping customers' supply chains meet green certifications and sustainability goals.



OUR CORRUGATED PLASTIC SHEET

Jinmai hollow boards use 100% recyclable PP as raw material, anchoring a green closed loop from the source: After screening, melting and shaping, the raw materials can be crushed and granulated when the finished products are discarded, realizing a "production→use→recycling" resource cycle and helping enterprises practice low-carbon concepts from the packaging end.

Jinmai Hollow Boards: Multidimensional Experts in Function and Scenario Adaptability:

- Antistatic Customization: Surface resistance $10^6-10^9 \Omega$, creating an "electrostatic isolation chamber" for electronic components and precision chips to prevent damage.
- Flame-Retardant Adaptation: Available with flame-retardant materials, up to UL94 V-0 grade, meeting industrial packaging and warehouse fire protection needs.
- Full Thickness Coverage: 2-12mm range. 2-4mm suits light scenarios like advertising displays and temporary barriers; 6-12mm matches load-bearing needs such as home appliance back panels and heavy-duty turnover boxes.



The hollow structure of hollow boards has a hidden ingenuity: It achieves light weight (density about $0.91g/cm^3$, making transportation easier) and high impact resistance. Its service life is more than 10 times longer than traditional cardboard, balancing "environmental protection" and "durability" perfectly in one board.

PROJECT
NUMBER ONE

Plastic Sheet

From the safe transportation of home appliances, the precise turnover of electronic components, to the efficient protection of logistics goods... Jinmai hollow boards are not only the "protective armor" for products, but also a "mobile business card" for enterprises to convey the concept of green production to the outside world.

Just as the core proposition goes: "Pursue richness in function, return to simplicity in sustainability" — The charm of Jinmai hollow boards lies in that they are not just a "qualified board", but a comprehensive solution that provides "functional solutions + environmental empowerment" for different industries and scenarios, making every packaging use a "win-win choice" for enterprises to reduce costs, cut carbon emissions, and improve efficiency.

Power lies in the introduction, and multifunctionality reflects sustainability. Take some time to explore, and you'll find how this plastic hollow board balances protective functions and green innovation.

- Made of 100% recyclable PP material, achieving a sustainable closed loop from production to recycling.
- Supports customized functions such as antistatic (surface resistance: $10^6-10^9 \Omega$) and flame retardant (up to UL94 V-0 grade), meeting diverse industrial needs.
- With a wide thickness range (2mm - 10mm), it can precisely match the needs of packaging, logistics, electronics and other fields.
- It has a lightweight and durable hollow structure, with a service life 10 times longer than traditional cardboard, while reducing material consumption.

Serial No.	Parameter Item	Description
01	Material	100% Recyclable PP
02	Thickness Range	2mm - 10mm (Customizable)
03	Max Width	2200mm
04	Length	Customizable
05	Function Extension	Antistatic, Flame-retardant, UV-resistant, etc.

Antistatic

PP Corrugated Plastic Sheet
Product Introduction



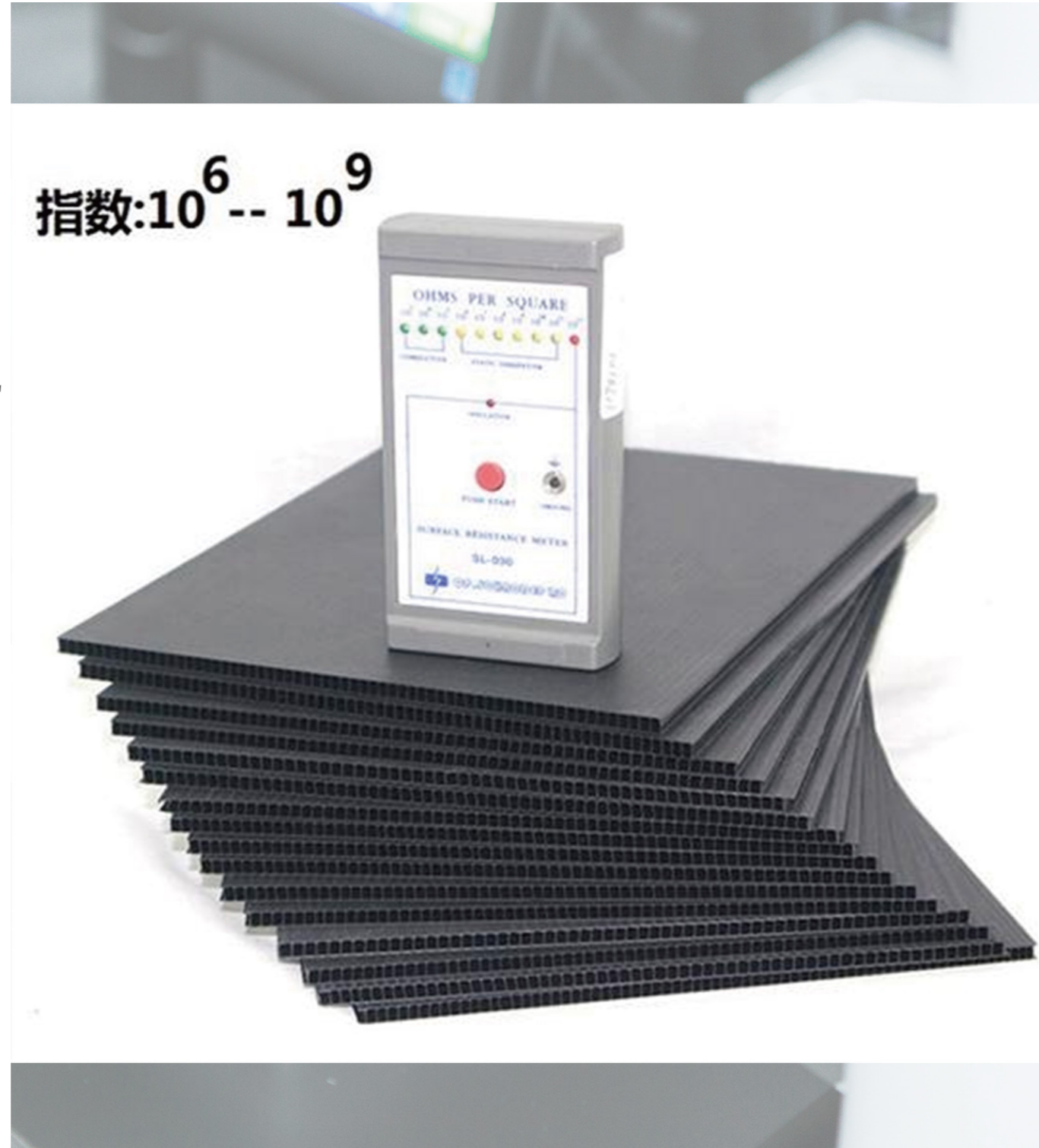
For the electronics industry, Jinmai antistatic hollow boards are not a "compromised choice"

but an inevitable choice that "both protects precision components and undertakes environmental responsibilities", making every turnover a double plus for "quality assurance + green production".

The "Invisible Static Killer" in the Electronics Industry, Jinmai Solves It with One Board

In the fields of electronic components, semiconductors, and precision instruments, static electricity is a fatal threat: Slight ESD may break down chips, damage circuit boards, leading to a sharp drop in yield and entire batch scrapping.

Traditional packaging falls into a dilemma: Ordinary foam/-cartons have unstable antistatic performance, and composite antistatic materials are difficult to recycle and not environmentally friendly, leaving enterprises in a dilemma between protection and sustainability.



Optimal Solution for "Precise Protection + Green Cycle"

Jinmai's antistatic hollow boards, relying on the "lightweight and sturdy" characteristics of hollow boards, plus "raw material modification + process upgrading", perfectly balance protection and environmental friendliness:

Stable Antistatic Performance: PP raw material with special antistatic additives, surface resistance stably controlled at 10^6 - 10^9 Ω , quickly dissipating static electricity, providing an electrostatic-free turnover environment for chips, sensors, etc.

Full-Process Protection: From warehouse stacking to long-distance transportation, the hollow structure buffers collisions, and the antistatic layer continuously works to prevent friction static accumulation, ensuring the safety of precision components throughout.

Green Recyclability: 100% recyclable PP raw material, can be crushed and recycled after disposal, with less than 5% loss in antistatic performance for recycled materials, meeting the clean production requirements of the electronics industry and reducing long-term packaging costs.

Why Choose Jinmai? Because We Take "Antistatic" to the Extreme

Jinmai antistatic hollow boards are not just qualified protective tools, but also a value carrier of "customization + long service life":

Precise Customization: Can customize 2-10mm boards, colors, and print antistatic warnings/product information according to turnover box sizes and pallet specifications, adapting to production lines.

Durability Guarantee: High-temperature melting + precision mold shaping process makes the boards more wear-resistant and anti-aging than ordinary materials. They can be reused ≥ 50 times in high-frequency turnover in electronics factories, with stable electrostatic performance, reducing long-term costs.

Flame-Retardant Type



"The 'Fireproof Armor' for Industrial Scenarios

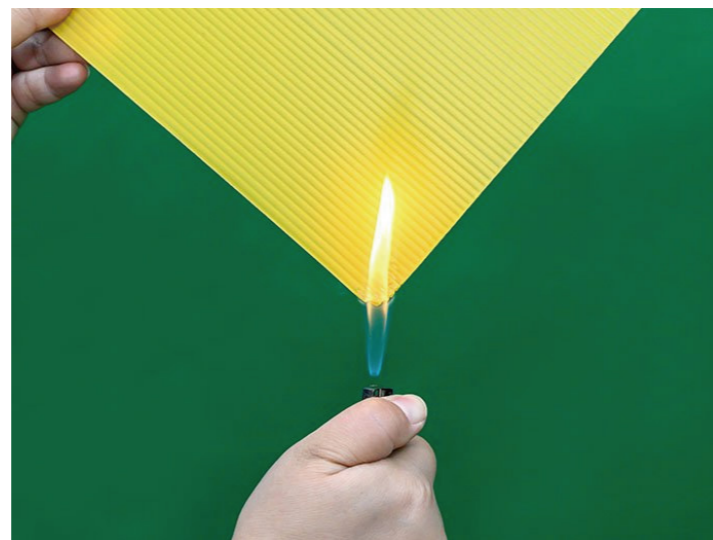
In fields like warehousing and logistics, automotive manufacturing, and building renovation, fire hazards loom like a sword of Damocles: static sparks from stacked goods, splashing welding slag, unexpected short circuits of electrical equipment—once packaging or materials are ignited, they can easily cause goods to burn, production lines to shut down, and even endanger personnel safety.

Flame Retardancy + Environmental Protection

Jinmai flame-retardant hollow boards break the industry dilemma of “flame retardancy must sacrifice environmental protection”:

Efficient Flame Retardancy: Uses ROHS/REACH certified eco-friendly flame retardants, reaching UL94 V-0 grade, self-extinguishing quickly when encountering open flames, with flame spread < 100mm/min.

Full-Scenario Protection: Warehousing pallets for auto parts (isolating welding sparks), temporary barriers in construction (blocking open flames), and logistics liners (slowing down fire spread) can all serve as fire barriers, while the hollow structure also ensures cargo protection.



For the industrial sector, Jinmai flame-retardant hollow boards are not "passive fire-resistant materials", but a core carrier of "proactively safeguarding safety + practicing green production". Let every board become a "brick in the firewall" in industrial scenarios, protecting property safety while undertaking environmental responsibilities.

PP Corrugated Plastic Sheet

Why Choose Jinmai? The Confidence to Take "Flame Retardancy" to the Extreme

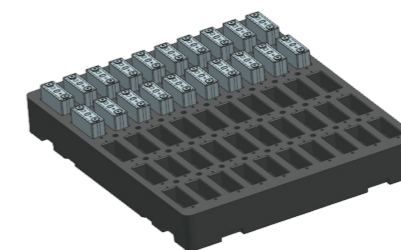
Jinmai flame-retardant hollow boards are not just fire-resistant boards, but a safety guarantee of "customization + long service life":

Precise Customization: Can be customized with thickness (4-10mm, the thicker the stronger the flame retardancy) and size according to scenarios, and print flame-retardant warnings/safety instructions; for example, red flame-retardant boards are used in welding stations of automobile factories to enhance warning and protection.

Durability Guarantee: Through the process of "high-temperature melting + precision mold shaping + deep integration of flame retardants", the boards are dense, and can be reused ≥ 60 times in high-frequency industrial scenarios, with stable flame-retardant performance, reducing replacement costs.

Grade	Performance Standard	Features
UL94 V-0	After two 10-second burning tests, the flame extinguishes within 30 seconds, and no burning drips ignite the cotton below.	The highest flame-retardant rating, with excellent flame retardancy.
UL94 V-1	After two 10-second burning tests, the flame extinguishes within 60 seconds, and no burning drips ignite the cotton below.	Good flame retardancy.
UL94 V-2	After two 10-second burning tests, the flame extinguishes within 60 seconds, and burning drips are allowed to ignite the cotton below.	Average flame retardancy.

Application Fields



New Energy Battery Knife Card Box

Used for the packaging and transportation of electronic components



Used for temporary protection of floors, walls, elevators, and windows, and is especially suitable for projects with specific fire protection requirements such as hospital renovation.



JINMAI
PLASTIC SHEET

UV-RESISTANT



Application in the Advertising Industry

The core of outdoor advertising is "visual reach", but sun exposure easily causes image fading and board embrittlement. As an advertising substrate, Jinmai UV-resistant hollow boards can not only accurately restore brand colors (such as high-saturation logos and main visuals) but also maintain over 85% color freshness after 3 years of outdoor exposure, making advertisements "eye-catching for a long time" and becoming a brand's mobile "outdoor business card".

- The UV blocking rate is $\geq 95\%$. Third-party testing shows that after 3 years of continuous outdoor exposure, the board color retention rate is $>85\%$ (ordinary hollow boards are only about 40%), so advertising images and brand logos remain clear and bright for a long time.
- While being UV-resistant, it retains the characteristics of PP material: "lightweight (density about $0.91\text{g}/\text{cm}^3$), recyclable (recycling rate up to 95%)", achieving both environmental protection and durability.
- Strong adaptability to multiple scenarios: "long-term outdoor billboards/displays" in the advertising industry, "side panels/turnover boxes for fruit and vegetable seedling greenhouses" in the agricultural field, "open-air cargo panels/storage pallets" in the logistics industry, etc. UV resistance in one place benefits all scenarios.
- The surface flatness error is $<0.1\text{mm}$, and the printing color reproduction rate reaches 98%. While being UV-resistant, it does not affect the accuracy of brand visual communication.

- Step 1** Use "base material modification + additive integration + surface protection" triple technology to build a full-link UV protection system of "blocking - absorption - weather resistance".
- Step 2** Add benzotriazole UV absorbers to the raw materials, achieve uniform integration through molecular-level dispersion technology, and fundamentally weaken the damage of UV to molecular chains.
- Step 3** Rely on twin-screw melt co-extrusion process (200°C high temperature) to fully mix UV absorbers with PP, ensuring uniform UV resistance from the surface to the core layer of the board and preventing local aging.
- Step 4** Spray an organic silicon weather-resistant protective coating on the board surface to form a micron-level protective film, further blocking UV erosion and delaying aging.

Why Choose Jinmai UV-Resistant Hollow Boards?



Outdoor scenarios (such as advertising displays, agricultural greenhouse enclosures, open-air logistics warehouses, etc.) are long-term "eroded" by ultraviolet rays. Ordinary hollow boards are prone to three major pain points: fading (brand visual failure), embrittlement (load-bearing protection decline), and cracking (interruption of cyclic use).

Jinmai UV-resistant hollow boards are specially designed to solve the "outdoor aging problem", making outdoor boards "both aesthetically pleasing and durable".

Application in Agriculture



In agricultural scenarios, the side panels of seedling greenhouses need to withstand long-term sun exposure, and fruit and vegetable turnover boxes need to be reused repeatedly. UV-resistant hollow boards can keep the side panels of seedling greenhouses from embrittlement and cracking for 3 years, ensuring stable temperature inside the greenhouses. After multiple turnovers, fruit and vegetable turnover boxes can still maintain toughness due to their UV-resistant properties, avoiding box cracking and damage to fruits and vegetables, while reducing the consumption of disposable packaging.



Application in Logistics and Warehousing

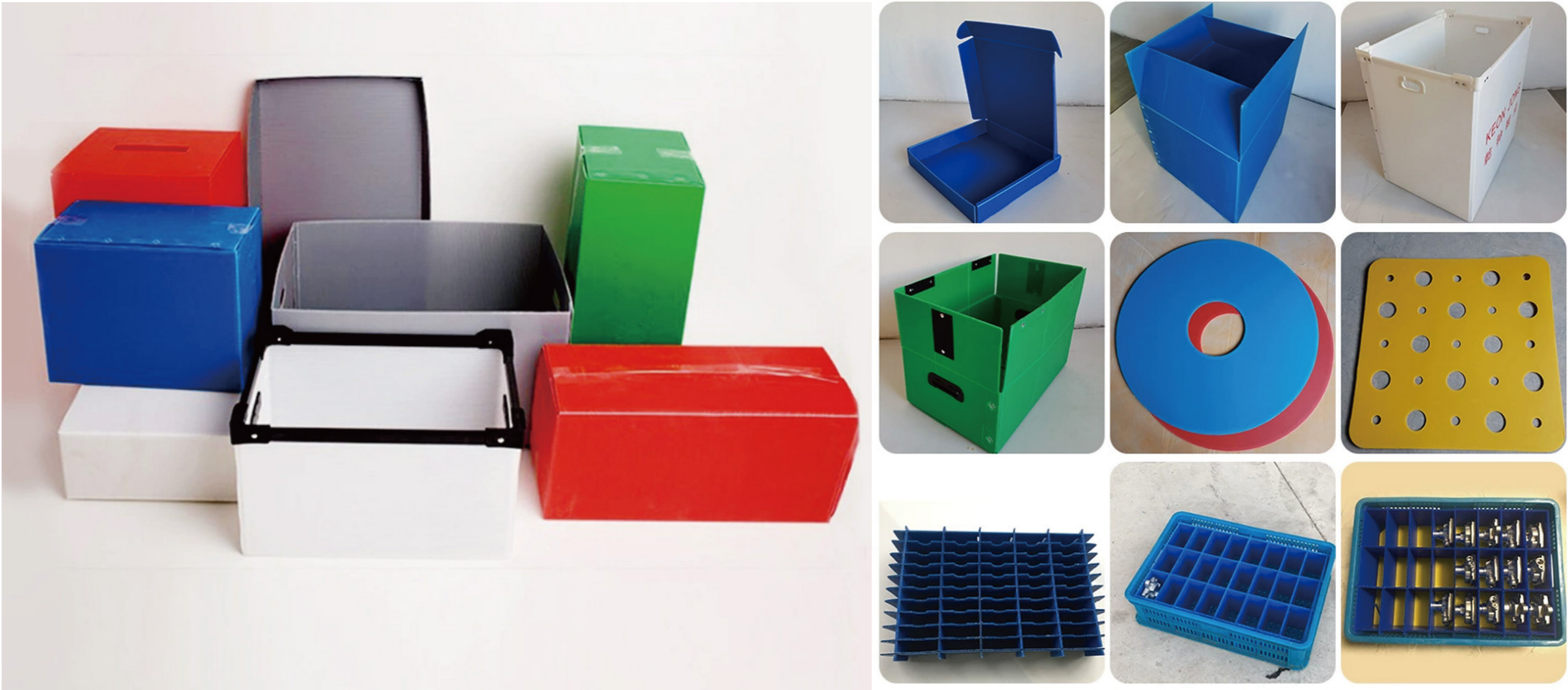
In outdoor logistics warehousing, cargo pallets and shipping containers endure prolonged exposure to ultraviolet radiation. Jinmai UV-resistant hollow boards maintain over 90% load-bearing capacity after high-temperature exposure (compared to just 60% for standard boards), ensuring sustained cargo protection. They also support over 30 more reuse cycles than conventional options, reducing long-term costs.

Test Item	Jinmai UV-Resistant Hollow Board	Ordinary Hollow Board
UV Blocking Rate	$\geq 95\%$	$< 60\%$
Outdoor 3-Year Color Retention Rate	$> 85\%$	$< 40\%$
Load-Bearing Retention Rate After Exposure	$\geq 90\%$	$< 60\%$
Recycling Rate	95%	80%
Surface Printing Reproduction Rate	98%	85%

Industry-Wide Customized Product Matrix

Industry Application

Covering core scenarios in multiple fields, Jinmai hollow boards, with "functional customization + scenario adaptation", have become "efficient solutions" for various industries.



Anti-static Turnover

Through raw material modification, the surface resistance of the board is stabilized at $(10^6 - 10^9 \Omega)$, creating a "no static interference" turnover and storage environment for precision components such as chips and circuit boards, and avoiding the risk of electrostatic breakdown from the source.



Cushioning Packaging

Customize 2-10mm thick buffer-type hollow boards, matched with precise knife card design, to provide "full wrapping + anti-collision" protection for home appliances such as refrigerators and washing machines.



Flame Retardant Protection

Adopt environmentally friendly flame retardants to make the boards meet the UL94 V-0 flame retardant standard, self-extinguishing quickly when encountering open flames.



Lightweight Turnover

The hollow structure achieves a balance of "lightweight (density about $0.91g/cm^3$) + high load-bearing". When making turnover boxes and coamings, it not only reduces transportation energy consumption but also stably protects goods, helping the logistics link to "improve efficiency and reduce costs".



Visual Display

The surface flatness error is $<0.1mm$, and the printing color reproduction rate reaches 98%. Meanwhile, the UV-resistant type can ensure that outdoor advertisements do not fade for 3 years. It is suitable for scenarios such as outdoor billboards and exhibition stands, allowing brand visuals to "reach audiences brightly for a long time".

Hollow Board Box Series

Say goodbye to "disposable" waste and embrace "circular" value —— Hollow board boxes are not only a packaging container, but also a strategic tool for enterprises to optimize the supply chain and implement sustainable development.

Whether in the entire scenarios of logistics turnover, industrial storage, or food transportation, hollow board boxes, with the triple advantages of "lightweight, durable, and environmentally friendly", have become the core choice for enterprises to reduce costs and increase efficiency.



A Full-scenario Adaptation

Hollow board boxes use polypropylene (PP) as raw material and have a hollow structure, inherently featuring three advantages: "lightweight, tough, and economical" —— their self-weight is only 1/5 of that of wooden boxes, and the load-bearing capacity of a single box can reach 30-150kg.

Compared with traditional cartons, the number of repeated uses exceeds 50 times, directly reducing packaging turnover costs by more than 30%.

B Precisely Solve Pain Points

Automotive Industry: Thickened plates + reinforced rib design, with a load-bearing capacity of up to 200kg, impact-resistant and wear-resistant, perfectly supporting the workshop circulation and long-distance transportation of auto parts.

Electronics Industry: Add antistatic agents to effectively avoid damage to electronic components due to static electricity, suitable for the transportation and storage of precision products.

C Align with Dual Carbon Trends

Under the "Dual Carbon" policy and corporate ESG demands, hollow board boxes have become the core representative of "green packaging".

It has the advantage of full-cycle low carbon: there is no harmful emission during production, and it can be 100% recycled and remanufactured after being discarded, reducing more than 80% of solid waste compared with disposable cartons.

D Cost Reduction and Efficiency

Compared with traditional cartons, the cost of hollow boards is more controllable.

Although the single procurement cost is higher than that of cartons, considering "repeated use + recycling residual value", the total annual packaging cost is 40%-60% lower than the traditional solution, and the cost-effectiveness is remarkable in long-term use.

Jinmai Plastic

Choosing Jinmai hollow board boxes

is not just choosing a packaging

but also choosing a "supply chain optimization partner"

Jinmai hollow board boxes are not just standardized packaging! They are a one-stop packaging solution deeply tailored to industry needs and customized for you —— from structural design to production and delivery, they precisely match your scenario pain points throughout the process, helping you solve packaging problems, optimize supply chain efficiency, and make warehousing and logistics more worry-free, efficient, and cost-effective!

Product Series

Knife Card Boxes & Skeleton Boxes

Jinmai Knife Cards & Knife Card Boxes

Crafted with high-performance PP hollow boards, they can achieve refined partition protection, ensuring products do not rub against each other during warehousing and transportation, avoiding scratches, and always remaining neat and orderly;

Support full-dimensional customization, precisely matching the size and shape of your products, significantly improving space utilization, reducing the risk of loss, and making handling and logistics flow more efficient and worry-free;



Transportation Efficient and Secure

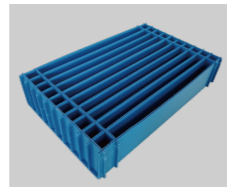
Jinmai's tough PP hollow board can be precisely customized with partition structures to fit different product sizes and shapes;

It achieves neat storage without compression and prevents scratches and collisions during transportation, reducing losses from the source.



Electronic Knife Card Box

chips and circuit boards, fundamentally avoiding friction scratches and electrostatic damage.



Knife Card Partition

Customize the size and partition layout as needed, perfectly matching the shapes of different electronic components



Anti-static Turnover Box

Customize the box specifications and internal partition layout according to production line requirements



Precision Component Turnover Box

Specially built as a "mobile protection cabin" for precision electronics and instrument components: the box body is tough, drop-resistant and wear-resistant, with internal customized partitions precisely matching precision components.



Multifunctional Partition Set

Made of anti-static and high-toughness material, it can be freely combined into a "storage grid" to organize scattered small components, improving space utilization and protection.



Standardized Partition Turnover Box

with clear loading and classification, improving warehousing turnover efficiency and helping standardize material management.



Jinmai Skeleton Box

Give heavy objects "stable sense of security", the first choice for industrial-grade packaging!



Electronics Industry · Manager Zhang

We transport precision instruments with Jinmai skeleton boxes, and there is no damage even after long-distance bumps. The protection is really in place!



Logistics Enterprise · Supervisor Li

Skeleton boxes have strong load-bearing capacity and stable stacking, which greatly improves our warehousing and transportation efficiency, and the cost is more controllable.



Hardware Manufacturing · General Manager Wang

The customized skeleton box perfectly matches the size of our large parts, is easy to load and unload, and can be reused. It's too practical!

骨架箱

Skeleton Box: Designed with high-strength PP hollow boards and a sturdy skeleton, it features a stable and durable structure. It provides reliable packaging protection for large, heavy, and irregular-shaped goods. Widely applied in warehousing, turnover, and long-distance transportation in electronics, hardware, logistics and other industries, making heavy goods packaging both "tough" and worry-free.

- ✔ High-strength skeleton + high-quality hollow board, outstanding load-bearing and impact resistance.
- ✔ Customizable in size and structure as needed, perfectly matching different cargo shapes.
- ✔ Lightweight box, easy to load, unload and carry, reducing labor and logistics costs.
- ✔ Wear-resistant, corrosion-resistant, and recyclable, green and economical.
- ✔ Good sealing/protection, dust-proof and moisture-proof, safeguarding cargo cleanliness and safety.
- ✔ Stable stacking, optimizing warehouse space utilization and improving warehouse management efficiency.

Skeleton Box Display



Jinmai

Turnover Box Series

Your Packaging Solutions Expert

Professionalism | YOUR EXCLUSIVE PACKAGING SOLUTIONS EXPERT | JINMAI
 Customize Packaging Solutions with Professionalism



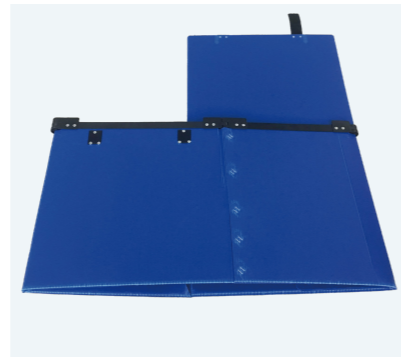
Stackable Turnover Box

Modular design makes the boxes stack as stable as a rock, fully tapping the potential of vertical warehouse space;



Custom Turnover Box

Color, size, and internal compartments can be fully customized. It can handle both the "gentle protection" for electronic precision parts and the "hardcore load-bearing" for industrial heavy components.



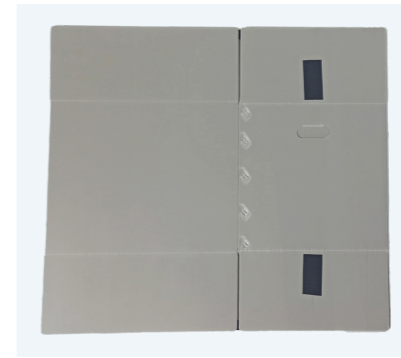
Foldable Turnover Box

Innovative folding structure saves over 70% of space when empty; selected eco-friendly and recyclable materials, with both durability and sustainability, reducing long-term packaging costs while aligning with the "green development" trend.



Environmental Protection Box

Made of recyclable and environmentally friendly materials, it balances tough protection and low-carbon attributes, helping the energy industry reduce packaging carbon emissions



Corrosion-Resistant Box

Targeting the medium characteristics of the oil and gas industry, it adopts special materials resistant to acid, alkali and corrosion, which can effectively resist the erosion of oil and gas-related chemicals.



Standardized Turnover Box

Strictly follow standardized production, with precise and uniform box size and protection performance; equipped with a clear identification system, facilitating warehouse traceability and quality management, making every turnover "traceable", and providing stable support at the packaging end for enterprises' quality control systems.

Market-Driven Solutions

- ✓ Custom packaging design based on market demand analysis
- ✓ Supply chain efficiency optimization consultation for warehousing and logistics
- ✓ Market trend insight, guiding the direction of packaging innovation

Customization Support

- ✓ One-to-one customization service for size, color, and structure
- ✓ Rapid prototype production to verify solution feasibility
- ✓ Technical guidance for use and maintenance

Sustainable and Innovative

- ✓ Material selection of environmentally friendly materials and recycling solutions
- ✓ Space-saving and efficiency-improving innovative structural design
- ✓ Long-term cooperation model to support continuous product iteration

Energy-Saving Packaging

- ✓ Select environmentally friendly materials for low-carbon supply chains
- ✓ Lightweight and durable design to reduce logistics energy consumption
- ✓ Customized solutions for storage and transportation of energy equipment

Complex Environment

- ✓ Use corrosion-resistant materials for chemical environments
- ✓ Sealed structure design to ensure the safety of sensitive components
- ✓ Provide customized packaging for oil and gas components such as valves and pipelines

Quality-Centric Approach

- ✓ Standardized production + strict quality inspection
- ✓ Traceable identification system, facilitating warehousing and quality management
- ✓ Ensure consistency in batch packaging applications

JINMAI

Fruits/Vegetables & Seafood Box



Core Advantages

Jinmai Fruits and Vegetables Box Series

Scientific Fresh-Locking Design: The box is reserved with uniform air vents (optional sealed lid), flexibly adjusting the humidity and air circulation inside the box. It not only prevents leafy vegetables from wilting but also avoids berries, mushrooms, etc. from rotting due to moisture, accurately extending the freshness period of fruits and vegetables.



Your Packaging Solutions Expert

Professionalism | YOUR FUTURE PACKAGING SOLUTIONS EXPERT | JINMAI
Customize Packaging Solutions with Professionalism

Product Features

Jinmai Fruits and Vegetables Box Series

- "Breathable Version" is suitable for leafy vegetables, herbs and other categories that need ventilation;
- "Sealed Version" protects moisture-sensitive ingredients such as berries and mushrooms, making fresh-locking more precise.
- Size, color, and surface printing (such as brand LOGO) can all be customized.
- The surface is smooth and does not retain dirt, and fruit and vegetable juices and mud are easy to rinse;
- Resistant to acid and alkali corrosion, it remains clean and structurally strong after long-term repeated use.



- Fresh E-commerce:** Protect the appearance of fruits and vegetables during cold chain distribution, reduce transportation losses, and ensure consumers receive goods "as fresh as just picked".
- Planting Base:** As the "first stop" for post-harvest sorting + temporary storage, protect the freshness of fruits and vegetables from the field to the warehouse, laying a good foundation for subsequent circulation.
- Commercial Supermarket Retail:** It is both a "replenishment turnover box" in the fruit and vegetable area and a "display auxiliary tool", keeping the goods always clean and full, enhancing consumer attraction.
- Catering Chain:** Undertake the ingredient distribution from the central kitchen to the stores, ensure the freshness and hygiene of fruits and vegetables, and help the catering supply chain to be standardized and efficient.

JINMAI

Express Box Series



Light·Tough·Economical for Express Logistics

Efficient Turnover Tool

Lightweight and Impact-Resistant, Cost-Reducing and Protective: Made of high-strength PP hollow board, it is 30%+ lighter than traditional cartons, reducing logistics weight costs; the box is designed with an impact-resistant structure, which can firmly protect the inner items even in rough sorting, greatly reducing the damage compensation rate.

Flexible Customization, Full-Category Adaptation: Size, color, and surface printing (such as express brand LOGO, "Fragile", "Fresh" warning signs) can all be customized. From 3C small items to fresh produce, clothing, home appliance accessories, etc., it can match exclusive packaging solutions.



Core Craftsmanship

Pain Point Solution for Express Industry

Adopt one-piece molding process, the box has no splicing gaps, and the sealing performance is better (optional sealed lid), which can prevent dust and water splashing, and protect express items even in rainy or humid environments; equipped with reinforced handles/buckles, which saves effort in handling and is convenient in packaging, significantly improving the sorting and pickup efficiency of express stations.

- 1** Lightweight and High-Strength: Lighter than cartons, tougher than cartons, achieving "weight reduction and durability" in logistics.
- 2** Circular and Environmentally Friendly: Reusable for more than 50 times, helping the express industry develop low-carbon.
- 3** Stackable and Space-Saving: The box adopts a scientific mechanical structure design, ensuring stable and non-slip stacking in multiple layers.
- 4** Customizable and Flexible: Size, printing, and protective structure can be customized on demand, covering all categories of express delivery.
- 5** Convenient and Efficient: Quick packaging and labor-saving handling, improving the efficiency of the entire express delivery operation chain.

JINMAI

Advertising Board Series

Enable Visual Communication of Brand and Packaging Value

Jinmai Packaging's advertising boards are not only dynamic communication windows for brand images but also concrete carriers for expressing the value of packaging solutions. Whether it's brand identification in warehousing centers, scene promotion in logistics sites, or creative display in terminal scenes, we transform core packaging advantages such as "customized protection, circular cost reduction, and full-scene adaptation" into intuitive and persuasive visual language, helping partners efficiently convey brand strength and business value.



THE PROFESSIONAL & FUN OF WORKING.

Jinmai breaks through the rigid form of traditional advertising boards and creates differentiated visuals with the idea of "scenario-based + creative": it can be a fun shape that fits festivals and themed activities, or a functional design that matches industry attributes, upgrading the advertising board from "one-way information output" to "two-way visual attraction" and becoming a memory link between the brand and users.

From various advertising board cases such as election propaganda, scene warnings, and real estate marketing (refer to the diverse styles on the right), it can be seen that Jinmai always follows the logic of "precise delivery + visual texture": first, deeply dissect the communication needs of different industries and scenarios, and then customize solutions from dimensions such as material (weather resistance, recognition), shape (creativity, scene adaptability), and information layout (hierarchy, readability), so that each advertising board can "precisely reach the target audience and strengthen brand memory points".

Core Capabilities of Jinmai Advertising Board Service



32+

Creative Shape Template Library



215+

Successfully Implemented Projects



378+

Scenario-Based Application Cases



17+

Long-term Cooperation Industries



Scene Warning Ad Boards

Our Professionalism

The advertising boards of Jinmai Packaging are not only the voice window for brand images but also the concrete communicator of the value of packaging solutions.



Festival-themed Ad Boards



Real Estate Marketing Ad Boards



Prompt Ad Boards



Campaign Ad Boards

JINMAI

Fence Board Series



Bottle and Can Fence Boards

Precise Slotting, the Storage Expert for Bottles

Specially designed for bottle and can products, relying on precise slotting and modular fence boards, it fits the bottle body tightly. It not only prevents collision and wear but also maximizes the use of warehouse space, greatly improving loading, unloading, and turnover efficiency. It is an efficient packaging solution for bottle and can products in the daily chemical and food industries.



Modular Splicing, Quick Assembly and Disassembly in 1 Minute



Wheel-equipped Rotating Fence Box

Push and Go, a "Mobile Warehouse" with Doubled Turnover Efficiency

Combining the advantages of universal wheels and fence boxes, it can move goods conveniently without additional handling tools. The fence is made of high-strength material, with good load-bearing and protection performance, especially suitable for frequent turnover scenarios such as workshops and warehouses, making "handling—storage" smoother.

"Universal Wheels Bear Up to 500KG+"

"Silent Wheel Design, No Noise Interference in Workshop Use"

Industrial Customized Fence Board Solution

Customization Required, the "Exclusive Protective Armor" for Industrial Components

Aiming at the packaging needs of special industrial components, it can customize the fence board structure according to the product size, shape, and protection requirements. From heavy machinery parts to precision instrument components, all can achieve "one-to-one" safe wrapping and efficient warehousing through exclusive fence boards, helping the industrial supply chain reduce costs and improve efficiency.



Customization Process

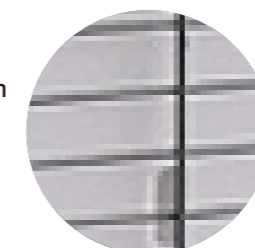
- ① Demand Communication
- ② Design and Prototyping
- ③ Mass Production and Delivery

Lightweight Grid Fence Board Series

Lightweight and Tough, a Efficient Packaging Choice with Breathability and Visibility

Made of lightweight grid material, it ensures the strength and protection of the fence board while significantly reducing weight and lowering handling energy consumption. The grid structure is ventilated and visible, suitable for scenarios such as fruits and vegetables, fresh produce, and electronic components that require breathability or warehouse visibility, making packaging "lighter" and smarter.

Material Lightweight: 30% Lighter Than Traditional Fence Boards





Your Packaging Solutions Expert

Professionalism | YOUR EXCLUSIVE PACKAGING SOLUTIONS EXPERT | JINMAI | Customized Packaging Solutions with Professionalism

Jinmai Packaging focuses on "full-scenario packaging needs". In addition to its core series, it has also built a rich product matrix covering multiple fields such as electronics, auto parts, commercial supermarkets, and pharmaceuticals. Relying on its capabilities in "customized design + high-performance materials + lean production", it provides "precise adaptation and efficient protection" packaging solutions for different industries, enabling various products to match exclusive packaging carriers and helping the efficient operation of the supply chain across the entire industry.

Introduction

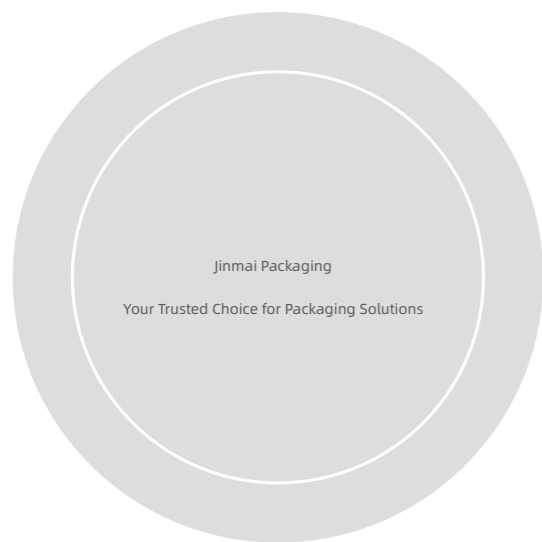
其它产品系列



Opportunities Stem from Professionalism and the Perseverance to Never Give Up



Jinmai Packaging takes core technologies and processes as the cornerstone and continuously expands the boundaries of packaging solutions. Other product series deeply cover more segmented scenario needs such as electronic precision components, auto parts heavy components, commercial supermarket display items, and pharmaceutical cold chain products. Through "scenario-based structural innovation + industry-specific material matching + one-to-one customized service", it can not only create an "anti-static disassembly cabin" for electronic components but also provide a "load-bearing and anti-collision turnover box" for auto parts, and customize "display + protection" integrated packaging for commercial supermarkets and pharmaceuticals. It helps enterprises in different fields achieve the multiple goals of "packaging cost reduction, circulation efficiency improvement, and brand value-added".





Partners -- Walk with Industry Leaders to Co-build a Packaging Value Network



Jinmai Packaging takes customized solutions, stable quality output, and full-link service capabilities as its core pillars, and deeply cooperates with leading brands in fields such as home appliances and consumer electronics. From "space optimization" in product warehousing, "hardcore protection" in logistics and transportation, to "display efficiency enhancement" in terminal scenarios, it provides precise packaging support for the full-link needs of partners such as Haier, Midea, and Hisense. With packaging as a link, it achieves a win-win situation for "product safety, brand texture, and supply chain efficiency".